

DNA Analyzers for on-demand, non-batched testing

- Fast:** PCR results on-demand
- Affordable:** Price of \$12,495 is affordable for all labs
- Easy to use:** Learn to use it in 10 minutes

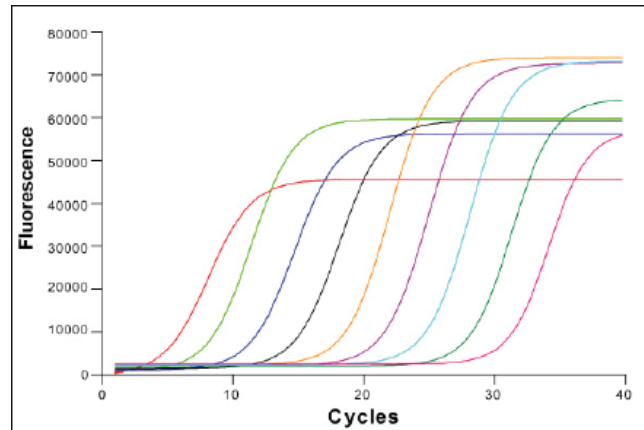
SpartanDX-12™



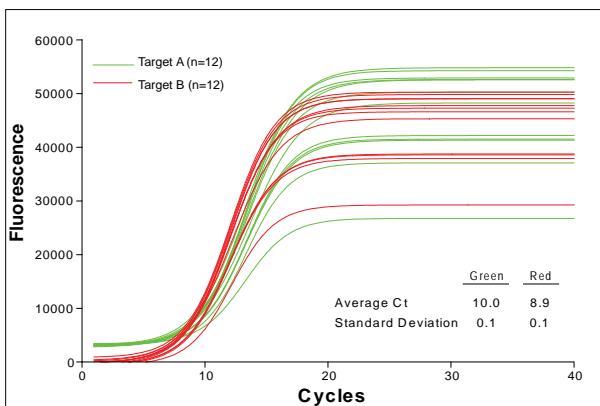
The Spartan DX-12™ is designed for non-batched PCR applications. It is a lightweight, stand-alone instrument.

Stop waiting. Start getting DNA results on demand.

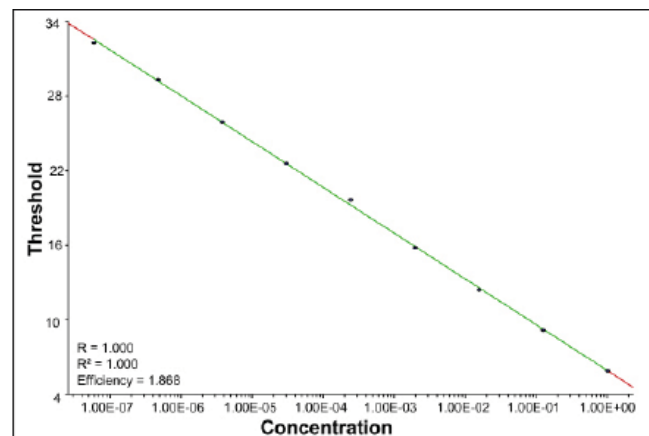
- 12-well sample capacity and dual-channel detection
- Performs 2 or 3-temperature PCR programs
- Small footprint maximizes bench space
- Built-in Reverse Transcription (RT) program for RNA analysis
- Compatible with leading reagents and kits



Real-time PCR results for 1/8 dilutions of amplicon DNA, demonstrating a 7-log dynamic range. Fluorescence in arbitrary units (a.u.) is plotted against cycle number.



Real-time PCR results demonstrating reproducibility and repeatability.



Efficiency plot for serial dilution.



High Performance
Tube & Cap



Tube Rack &
Centrifuge Adaptors



Specifications

Spartan DX-12	
TECHNICAL	
Sample capacity	<ul style="list-style-type: none"> 12 wells
PCR Modes	<ul style="list-style-type: none"> 2- temperature or standard 3-temperature programs
Detection modes	<ul style="list-style-type: none"> End-point Real-time (With appropriate license) Qualitative / Quantitative 2-channel detection (Excitation Green: 471-492 nm / Red: 555-584 nm) (Emission Green: 520-532 nm / Red: 620-800 nm)
Features	<ul style="list-style-type: none"> Melt Curve Analysis Reverse Transcription (RT) for RNA analysis
Data storage and transfer	<ul style="list-style-type: none"> USB flash drive
Operational requirements	<ul style="list-style-type: none"> Built-in LCD display and keypad. No external computer required. Standard PC with available USB port required for data transfer and analysis
Ease of use	<ul style="list-style-type: none"> Simple menus and user interface. Learn to use it in 10 minutes
Optimized Run-times	<ul style="list-style-type: none"> 15 min - 90 min
Graphing software	<ul style="list-style-type: none"> Spartan graphing and analysis software [included]
Heating / Cooling Rates	<ul style="list-style-type: none"> Average 60-90°C: 4.0°C/s Peak: 8.0°C/s
Reaction Tubes	<ul style="list-style-type: none"> Spartan tube with excellent thermal and optical performance
COMPATIBLE FLUOROPHORES	
Channel 1	<ul style="list-style-type: none"> Fluorophore: FAM/SYBR™ Green – Quencher: BHQ-1
Channel 2	<ul style="list-style-type: none"> Fluorophore: Cal Fluor 610/Texas Red/ROX – Quencher: BHQ-2
PHYSICAL	
Dimensions / Weight	<ul style="list-style-type: none"> Small footprint 17(W) x 36(D) x 12(H) cm / 4.2 kg [6.69"(W) x 14.17"(D) x 4.72"(H) / 9.3 lbs]
Package contents	<ul style="list-style-type: none"> Instrument, User manual, USB Flash Drive, 15V power supply, 1 accessory kit (consists of centrifuge adaptors, set-up rack, starter pack of tubes), CD with Graphing Software